



sst

School
of Stitched
Textiles

Patchwork & Quilting

SKILL STAGE 2 – ACCREDITED COURSE

City & 
Guilds

ACCREDITED

Contents

- 03 Overview
- 04 Course Delivery
- 05 Module 1
- 06 Module 2
- 07 Module 3
- 08 Module 4
- 09 Price Information
- 10 Graduate Story
- 11 Image Gallery
- 12 Enrolling
- 13 Supporting You



Overview

This City & Guilds accredited Patchwork & Quilting course is perfect for beginners.

Our courses aim to develop individual creativity. Whether you're looking to learn the basics or develop existing skills, our courses allow you to express yourself, experiment and really push your own creative boundaries.

These accredited courses are unique to the School of Stitched Textiles. They are comprehensive textile educational programmes that aim to not only teach essential techniques, but also enhance creativity and design skills.



Course Delivery

This course is supplied as a distance learning course where course materials and tutor assessments are delivered digitally and work is returned to your tutor via digital presentation.

You will work through written and illustrated course materials which are supplemented with 'how to' videos and online galleries.

Your coursework will be reviewed by your tutor and periodically by an Internal Quality Assessor. You will be provided with written feedback and, if needed, you will be able to re-submit altered work.

You can contact your tutor at any time to request your work to date be reviewed and suggestions for future progress be made.



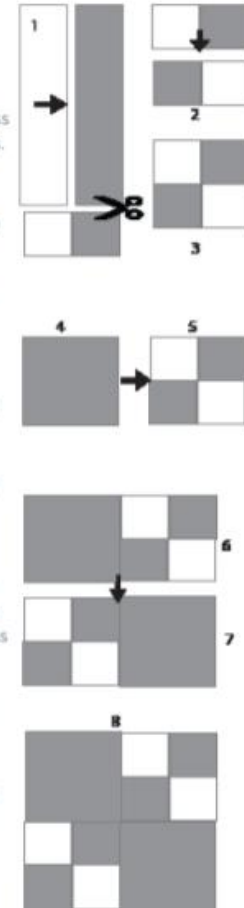
Modules

MODULE 1: THE BASICS

- Research of a chosen artist. You'll get the opportunity to explore different artist (across all mediums), to help you develop your own interest area and personal style
- We'll take you through the Patchwork & Quilting basics using a sewing machine
- Four and nine patchwork patterns
- Triangles and log cabin styles
- Introduction to rotary cutting
- Presentation methods. We'll teach you how to compile a digital folio of work to be sent to your tutor for assessment.

four patch variation

1. Rotary cut 2 strips of different colours, as shown in fig 1. If you don't have a particular size that you're working to, then 2.5" (6.25cm) is a good width. You would need a strip of 11" (27.5cm) lengthwise if you used this size.
2. Sew the strips together down their long sides and press seam allowance towards the darker of the two colours.
3. Cut 4 segments from your joined strips of 2.5" each. You will have a small piece over so you can straighten both outside edges.
4. Arrange two segments as shown in fig 2, one flipped around so that like colours are diagonal from each other.
5. Sew together, butting seams for a perfect match, as in fig 3.
6. Press seam allowance either way. The result is a four patch unit measuring 4.5" (11.25cm) square. Make another square in exactly the same way.
7. Cut 2 squares of fabric 4.5" (11.25cm) square and one to the right and the other to the left hand side of each of your two four patch units, as shown in fig 4&5. Press seams to one side.
8. Join the rows together, as shown in fig 6&7 to form a block.
9. The finished block size will be 9", but it will end up as 8.5" if you finish the edges with a border or join it to another block.
10. Press the seams on the completed block (fig 8)
11. This block has a number of names, but is often called Autumn Time block or Double Four Patch.



Modules

MODULE 2: DEVELOPING A PORTFOLIO

This unit is all about developing your own designs. You'll be given the chance to really experiment with different ideas and image while using different principles of line, colour and texture. You will learn how to:

Learn how to create a collection of your own photos to a theme, research 3 elements of design, experiment with mediums and methods to produce a folio of 8-10 design work progressions.



Modules

MODULE 3: MORE BASIC TECHNIQUES

In this modules you'll be taught more basic principles and techniques. These will include:

- Hand sewn techniques
- Using templates
- Hand piecing
- English quilting
- Hand and machine applique
- Finishing and professional edging.



Modules

MODULE 4: PRESENTATION OF WORK

The final module at this beginner level takes you through how to compile all of the work that you have completed throughout the course, which will be submitted for internal and external assessment.

At the end of the course you should have:

- A comprehensive design folio
- A sample folio containing samples of the different traditional and contemporary techniques
- One finished item/piece which can be either a 3D functional item, a panel, hanging, quilt or a wearable art item or garment
- The design work and planning for this item which demonstrates progression of quilting techniques
- Your artist/designer research.



Price Information

Completion.

At the end of the course we'll produce an online video showcasing the highlights of your learning journey. Since all of our courses are delivered via distance learning, you will not have to travel to the centre or transport physical work.

Pricing.

The cost of the course depends on how many modules you wish to pay for at once. For up-to-date pricing information, please visit the [price page on our website](#).

Students are allowed up to 1 year to complete this course.

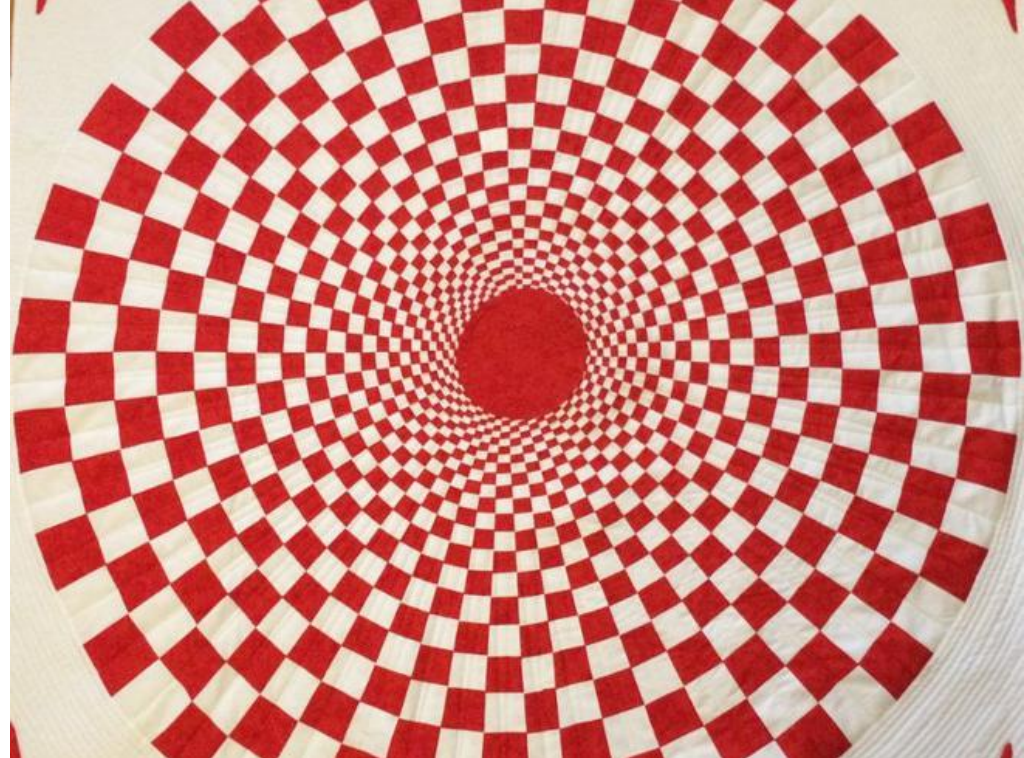




“The most helpful part of the course has been an opportunity to develop creatively, not just through learning new patchwork and quilting techniques but through working through the whole design process from researching different artists, learning about the elements of art, to going out to take photos to manipulate into my own designs.”

Clare Allison - Patchwork & Quilting Skill Stage 2





Enrolling

We open enrolment to new students 3-4 times throughout the year. This is your chance to secure a place on your chosen course and begin your creative journey.

As the UK's largest distance learning offering online accredited textile craft courses, demand for these courses is high. Therefore we only invite those who have previously 'expressed an interest' to enrol. If you'd like to be invited to enrol when it opens then please make sure you [register your interest](#).

Upon enrolment you will be asked to agree to and abide by [SST's terms & conditions](#) relating to this course.

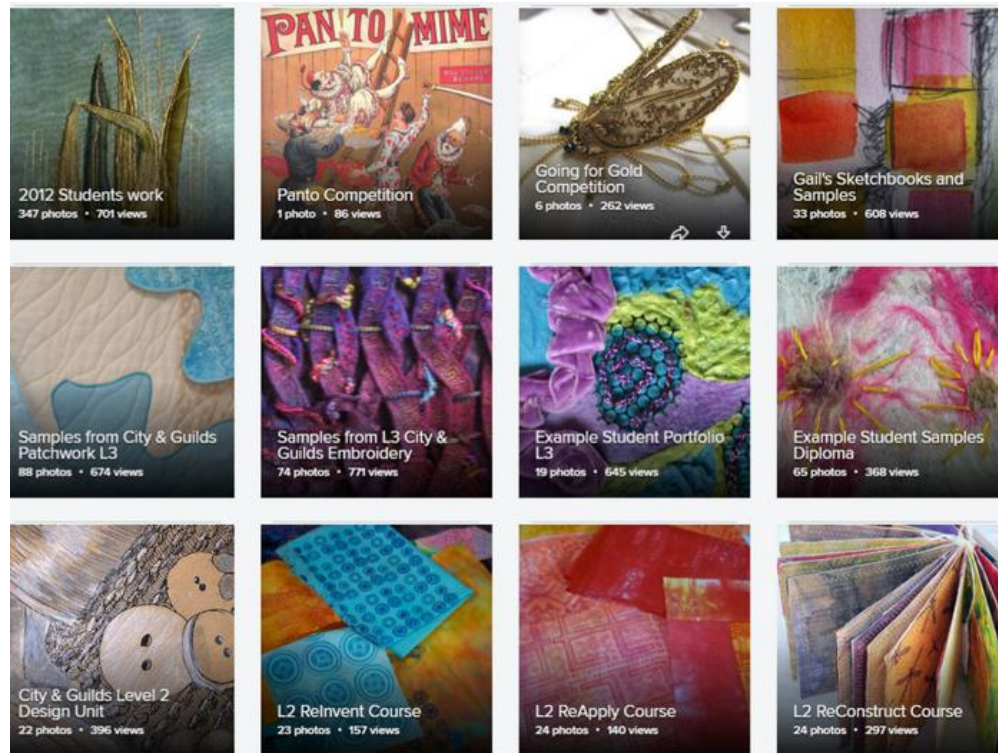


Supporting you

Although our courses are taught via distance learning we encourage students to connect with each other to share their learning journeys.

When students enrol they are invited to join their own unique 'group' on Facebook. These groups include students who will be starting their course at the same time as you.

This is a great way of allowing students to really feel like they are part of a group where they are able to express any concerns and share their creative progress. We also hold regular 'live chat' sessions with tutors.





School of Stitched Textiles (SST) Limited

Eccles Farm Needlecraft Centre
Eccles Land
Bispham Green
Ormskirk
Lancashire, UK
L40 3SD

T: 01257 463163
E: info@safost.org
W: www.sofst.org

School of Stitched Textiles, All
Rights Reserved. Registered in
England in Wales No. 05935078

